

Lake Vänern Archipelago and Mount Kinnekulle UNESCO Biosphere Reserve



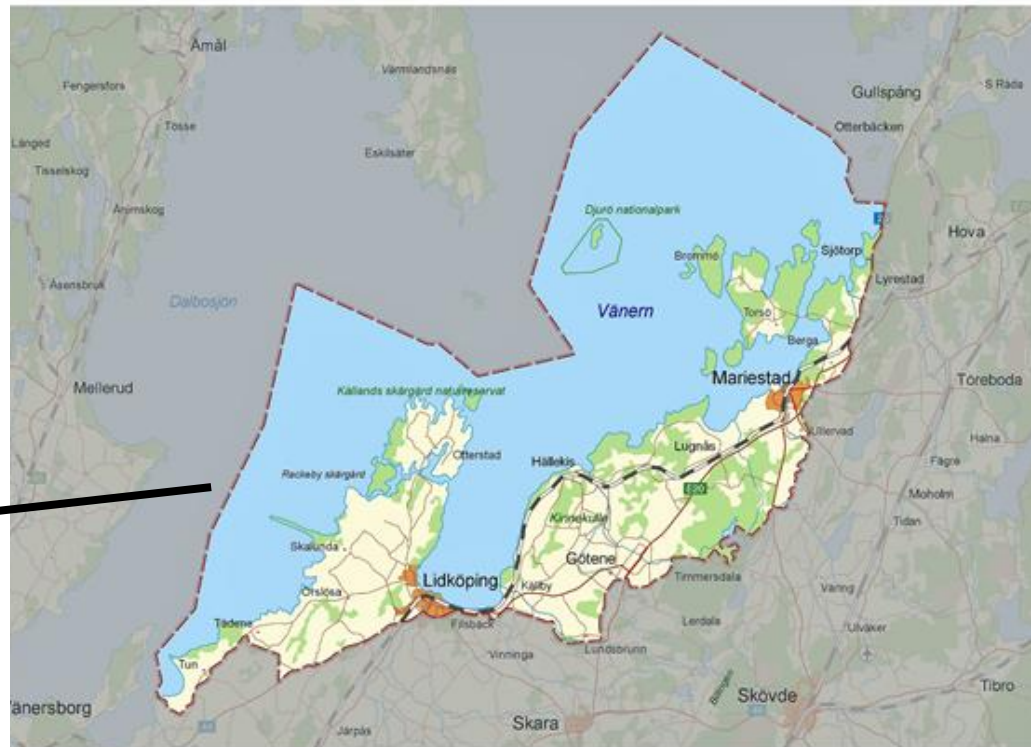
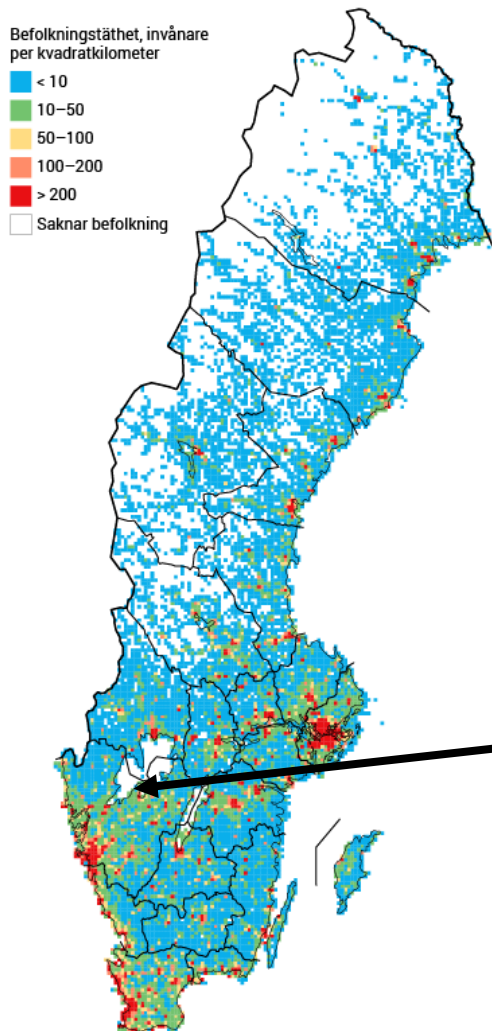
**Welcome to Lake
Vänern Archipelago
and Mount Kinnekulle**

**Helena Torsell
Koordinator**

Lake Vänern Archipelago and Mount Kinnekulle UNESCO Biosphere Reserve



UNESCO designation: 2010



Total area: 278 600 hectares

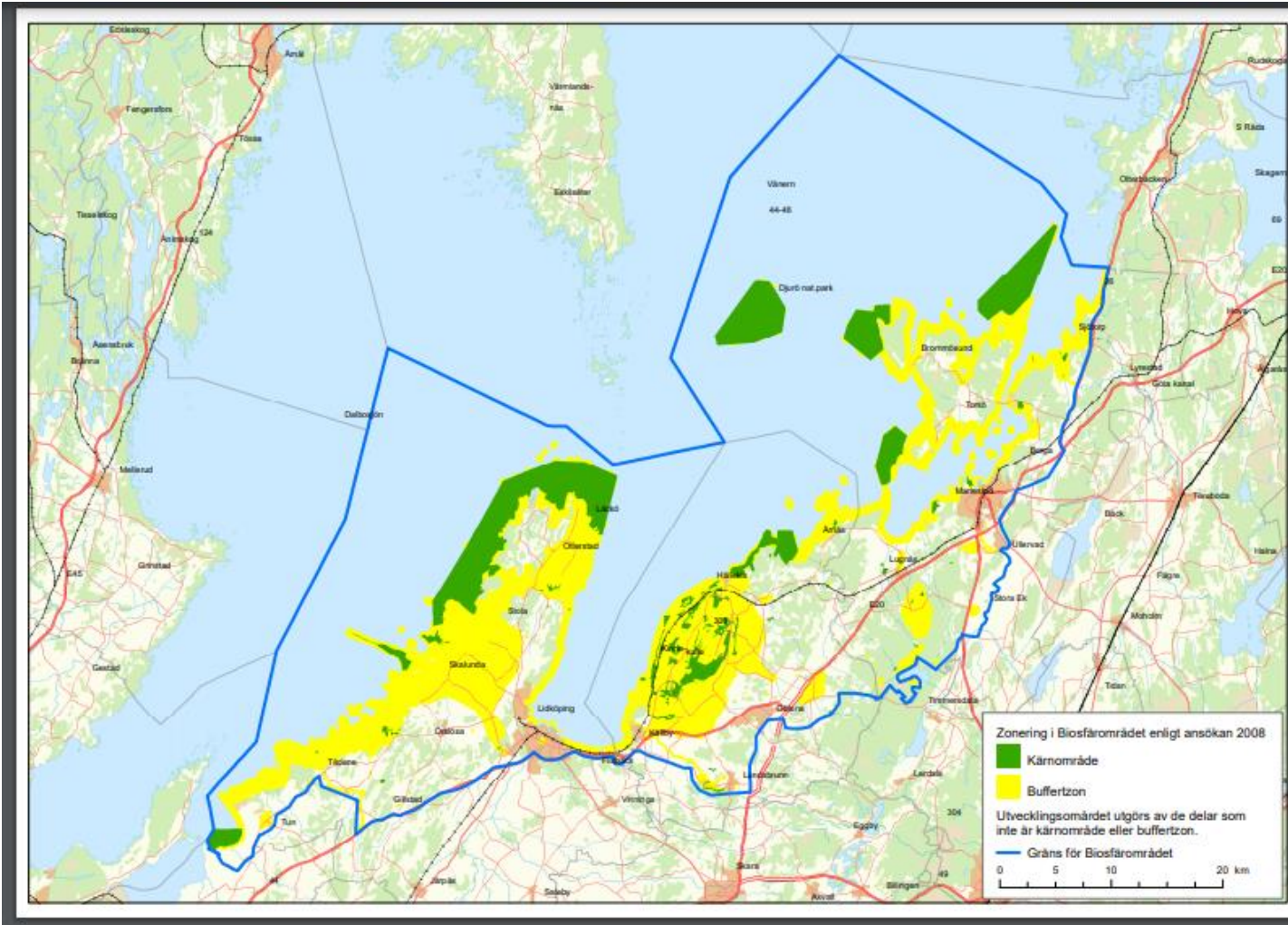
Approximately 78 400 residents

3 municipalities

Highest point: Kinnekulle, 306 meters above sea level

Unique features: Rich biodiversity and rare habitats (e.g. alvar, broadleaf forests)
Strong cultural heritage and active rural communities

Lake Vänern Archipelago and Mount Kinnekulle UNESCO Biosphere Reserve



Rich nature and cultural values

- 78 core areas
- 19 buffer zones
- National interest in outdoor recreation
- Diverse plant and bird life
- Several landscape types
- High geological values
- 7000 years of history

Lake Vänern Archipelago and Mount Kinnekulle UNESCO Biosphere Reserve



Lake Vänern Archipelago

Vänern is the biggest lake in Sweden and EU:s biggest lake

Vänern provides drinking water to 800 000 people.

The archipelago is rich of beautiful places and the lake also provides us with local products like fish and whitefish roe.



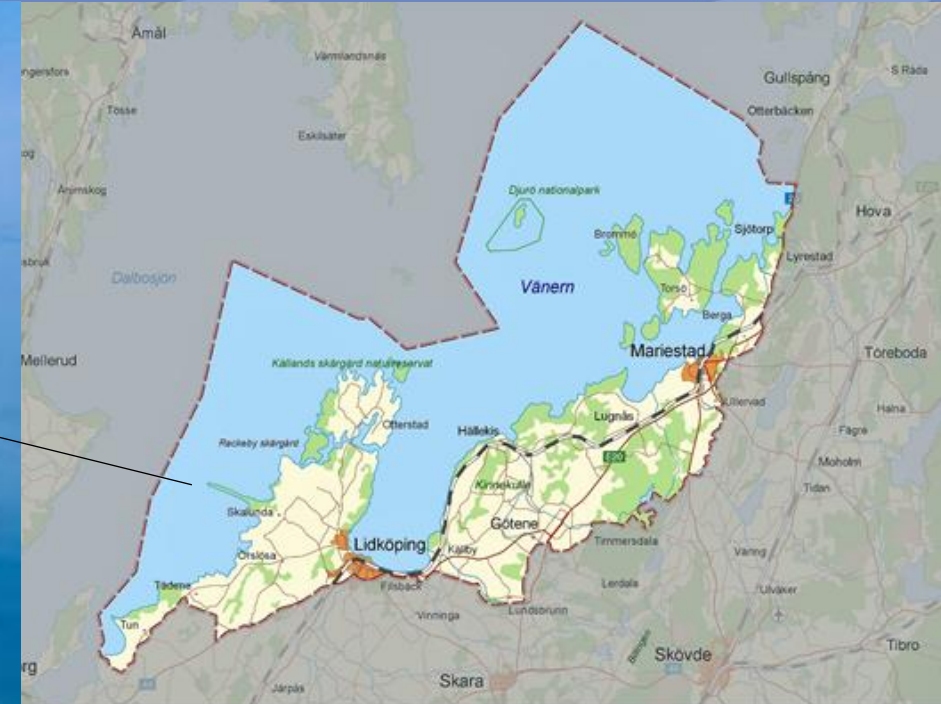
Lake Vänern Archipelago and Mount Kinnekulle UNESCO Biosphere Reserve



Unique nature - in the western part of the Biosphere Reserve you find Hindens rev.

Hindens Rev is part of the central Swedish ice-edge zone, which was created during the last ice age 10,000 years ago.

Hindens Rev is a nature reserve and well worth a visit, with its distinctive scenery. A hiking trail runs right out to the tip.



Hindens rev

Lake Vänern Archipelago and Mount Kinnekulle UNESCO Biosphere Reserve



Rich in cultural heritages

Läckö Castle on the shores of Lake Vänern, has medieval origins.

With its impressive facade and beautiful surroundings, is one of Sweden's most well-preserved historic buildings.

Over the centuries, the castle has been a fortress, a bishop's residence and a stately seat of nobility.

Lake Vänern Archipelago and Mount Kinnekulle UNESCO Biosphere Reserve

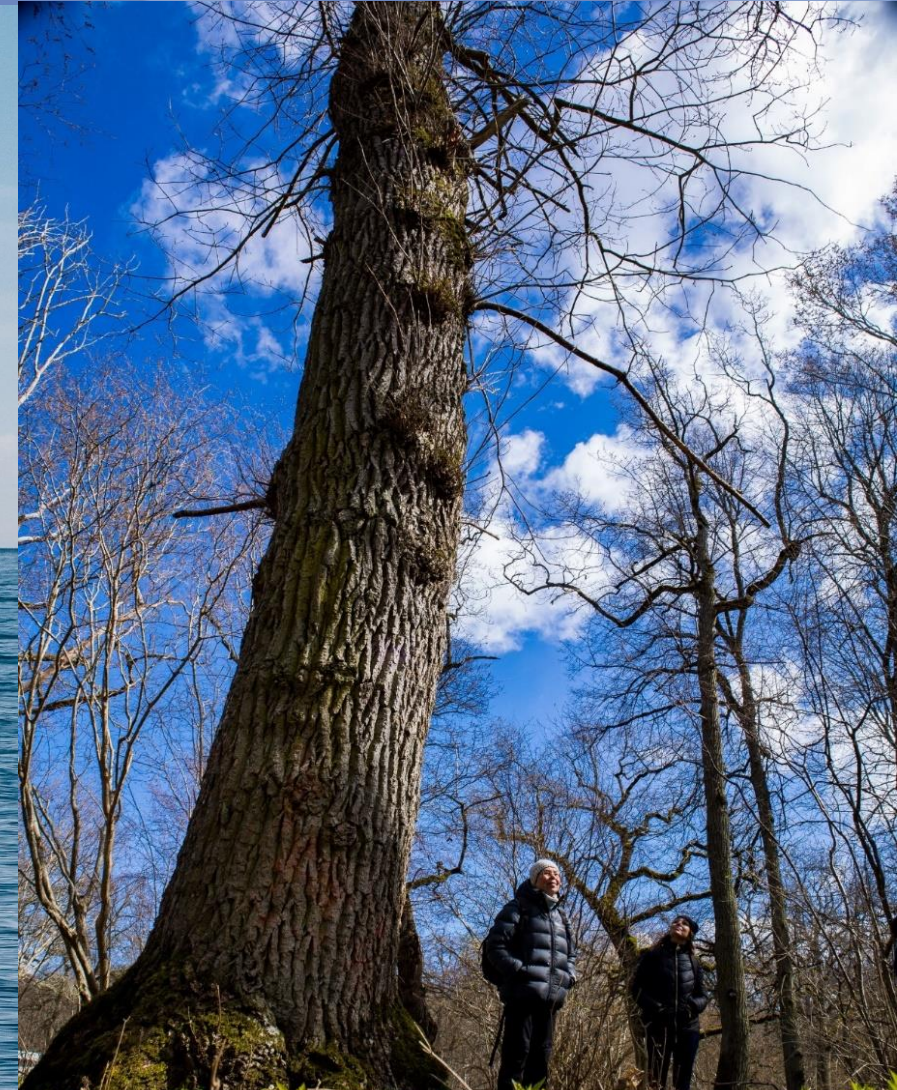


Kinnekulle – the ‘flowering mountain’

Kinnekulle, 306 meters above sea level

Table mountain

Features unusually diverse geology and plant life, including mighty ancient oaks.



Lake Vänern Archipelago and Mount Kinnekulle UNESCO Biosphere Reserve



The Biosphere Trail

The hiking trail goes along Lake Vänern's southern shore, between Mariestad and Läckö Castle.

The 140 km long Biosphere Trail goes through several villages and towns, but most of it is through lovely countryside.

www.biosfarleden.se



Photo Daniel Ström

Lake Vänern Archipelago and Mount Kinnekulle UNESCO Biosphere Reserve



A non-profit association

Approximately 100 members, different categories of membership.

The board consists of representatives from the municipalities of Lidköping, Götene and Mariestad, The County Administrative Board, the business sector and the civil society.

The Biosphere Office – 2 employees



Lake Vänern Archipelago and Mount Kinnekulle UNESCO Biosphere Reserve



Principles of the Association

- To Inspire – we show good examples
- To build bridges and mediate between different stake holders
- To lead processes and projects
- To create meeting places

Lake Vänern Archipelago and Mount Kinnekulle UNESCO Biosphere Reserve



The Biosphere Ambassadors

Approximately 50 biosphere ambassadors.

Sustainable engagement from personal pre-conditions.

The members, the biosphere office as well as the ambassadors engage in the development of the Biosphere area.



Lake Vänern Archipelago and Mount Kinnekulle UNESCO Biosphere Reserve



We have two logos specially adapted to our corporate members who act for a sustainable future. In order to use these, answers to a number of questions are required, as well as signing an agreement.

The Biosphere Association is restrictive with these logos and therefore far from everyone can use them.

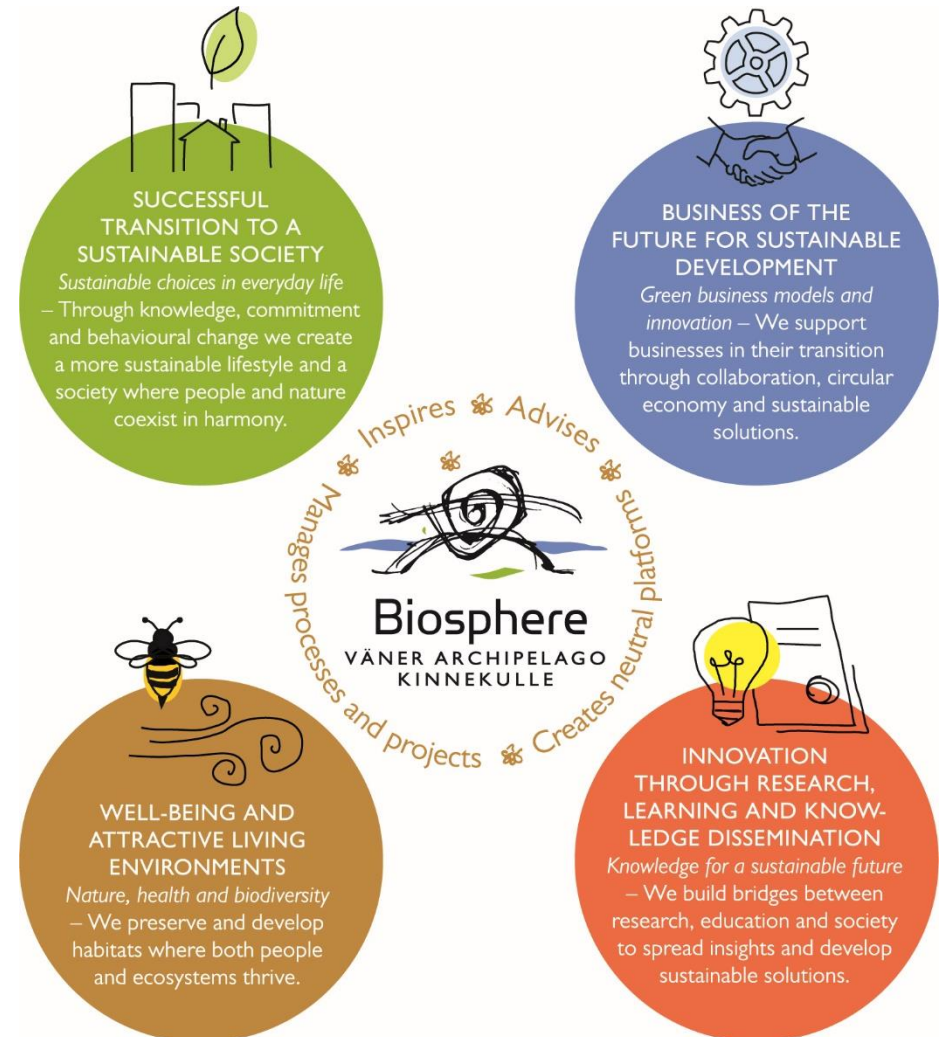


Lake Vänern Archipelago and Mount Kinnekulle UNESCO Biosphere Reserve



Action Plan 2025-2030

The plan consists of four themes that the association will focus on in the coming years.



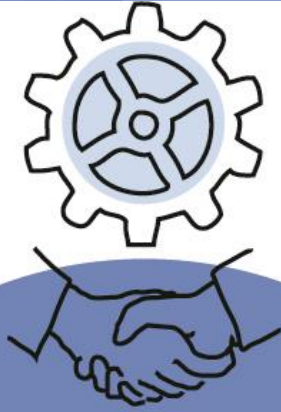
Lake Vänern Archipelago and Mount Kinnekulle UNESCO Biosphere Reserve



**SUCCESSFUL
TRANSITION TO A
SUSTAINABLE SOCIETY**
Sustainable choices in everyday life
– Through knowledge, commitment
and behavioural change we create
a more sustainable lifestyle and a
society where people and nature
coexist in harmony.

A green circular graphic containing a line-art icon of a house with a chimney and a leaf above it. Below the icon is the text 'SUCCESSFUL TRANSITION TO A SUSTAINABLE SOCIETY' in bold, followed by 'Sustainable choices in everyday life' in italics, and a paragraph starting with '– Through knowledge, commitment and behavioural change we create a more sustainable lifestyle and a society where people and nature coexist in harmony.'

Lake Vänern Archipelago and Mount Kinnekulle UNESCO Biosphere Reserve



BUSINESS OF THE FUTURE FOR SUSTAINABLE DEVELOPMENT

*Green business models and
innovation – We support
businesses in their transition
through collaboration, circular
economy and sustainable
solutions.*



Lake Vänern Archipelago and Mount Kinnekulle UNESCO Biosphere Reserve



WELL-BEING AND ATTRACTIVE LIVING ENVIRONMENTS

Nature, health and biodiversity
– We preserve and develop
habitats where both people
and ecosystems thrive.

Lake Vänern Archipelago and Mount Kinnekulle UNESCO Biosphere Reserve



INNOVATION
THROUGH RESEARCH,
LEARNING AND KNOW-
LEDGE DISSEMINATION

Knowledge for a sustainable future
– We build bridges between
research, education and society
to spread insights and develop
sustainable solutions.



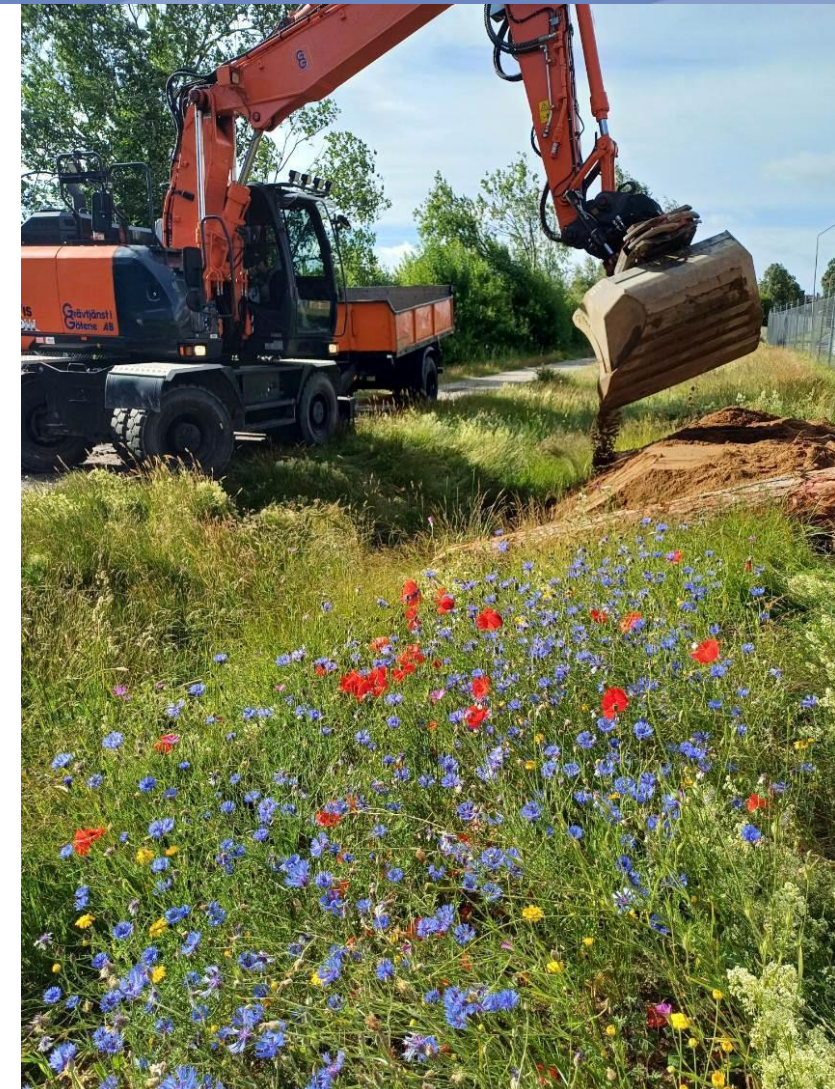
Lake Vänern Archipelago and Mount Kinnekulle UNESCO Biosphere Reserve



Semper Pollinator Path

The initiative was taken by Semper.

Strengthening both the biological diversity on the site as well as strengthening the knowledge among the citizens about the importance of the biological diversity and functional eco systems. This was done by working with a well visited old railway embankment, in one of the central villages of the BR. The site is situated in the middle of an industrial area.



Lake Vänern Archipelago and Mount Kinnekulle UNESCO Biosphere Reserve



Strengthened biodiversity along power lines streets at Kinnekulle 2022-2025

- Kinnekulle Energy, the Municipality of Götene, The University of Skövde, Lake Vänern Archipelago and Mount Kinnekulle UNESCO Biosphere Reserve
- The project aims to map the biotopes in power line streets on Kinnekulle in relation to the green infrastructure of the surrounding landscape's biotopes in order to analyze, based on this, how adapted land management within the power line streets can strengthen the conditions for biological diversity within the entire landscape.



Climate art in the UNESCO landscape – pilot study

- Aims to investigate the possibilities of creating large-scale art in Lidköpings – Götene and Mariestad municipalities where two UNESCO designations overlap. The content of the pilot study focuses on climate change and societal transformation.
- The background is the major changes taking place in the region with new establishments, immigration and climate impact – which requires new ways of engaging residents and visitors. Through art and culture, the project wants to create both attractiveness and increased awareness of the climate challenges.

Lake Vänern Archipelago and Mount Kinnekulle UNESCO Biosphere Reserve



Nature in Balance - civil society's fight against invasive plants

- Aims to counteract the spread of invasive alien plants by engaging civil society and increasing the knowledge of garden owners, associations and other local actors.
- Through information efforts, method development and coordination, the project will contribute to actual measures that strengthen biodiversity and protect ecosystems.



Lake Vänern Archipelago and Mount Kinnekulle UNESCO Biosphere Reserve



Collaborative project for biodiversity in the Biosphere Reserve

- Aims to bring together 4 landowners, local and regional authorities and the biosphere association to strengthen the conditions for biodiversity and green infrastructure in the biosphere reserve by creating new flowering areas and other small biotopes of various types in the agricultural landscape.



Medfinansieras av
Europeiska unionen



Lake Vänern Archipelago and Mount Kinnekulle UNESCO Biosphere Reserve



Thank you!

Helena Torsell, koordinator
www.vanerkulle.org